

INSTALLATION DIRECTIONS FOR GM P/N 534 STUDFIXER

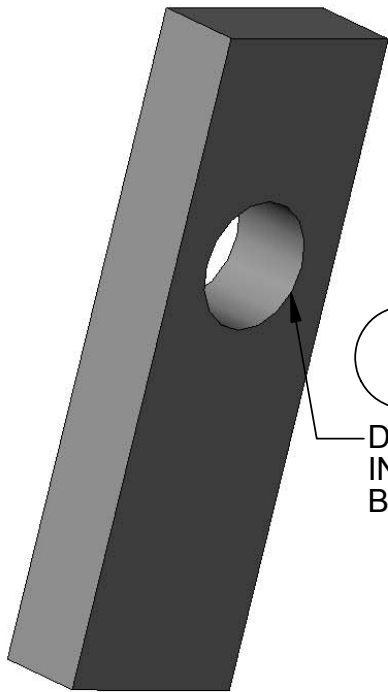
TM

STUDFIXER

2

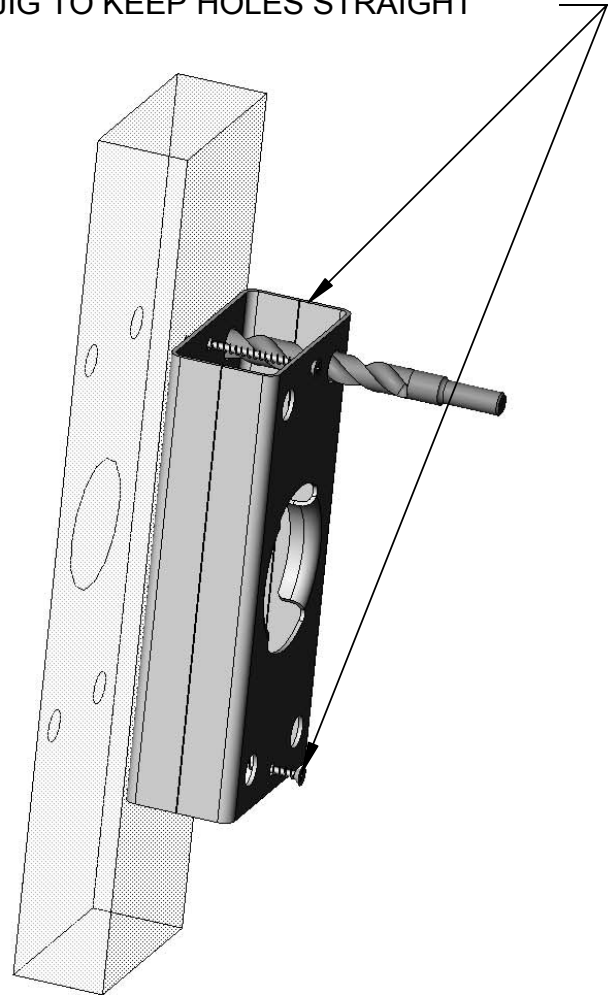
ATTACH DRILL JIG TO STUD WITH 2 DRY WALL SCREWS (A SHORT PIECE OF 1-1/2 PIPE WILL HELP TO ALIGN THE DRILL JIG)

DRILL 4- 17/32 HOLES WITH DRILL PROVIDED USING JIG TO KEEP HOLES STRAIGHT



1

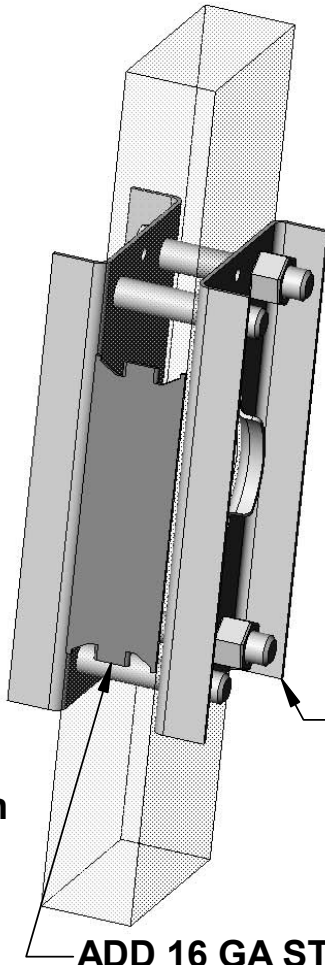
DRILL 2-1/16 HOLE IN CENTER OF BEAM AS SHOWN



3

REMOVE DRILL JIG AND ATTACH 2 BRACKETS WITH BOLTS AND NUTS PROVIDED IN KIT

TIGHTEN BOLTS 5 FT-LBS TORQUE (FIRMLY, BUT DO NOT DAMAGE THE WOOD)



ADD 16 GA STUD GUARD TO PROTECT PIPE

GREENFIELD MFG CO
9800 BUSTLETON AVE
PHILA, PA 19115

for technical information
check our web site:
WWW.GFM.BIZ

COPYRIGHT 2005

©