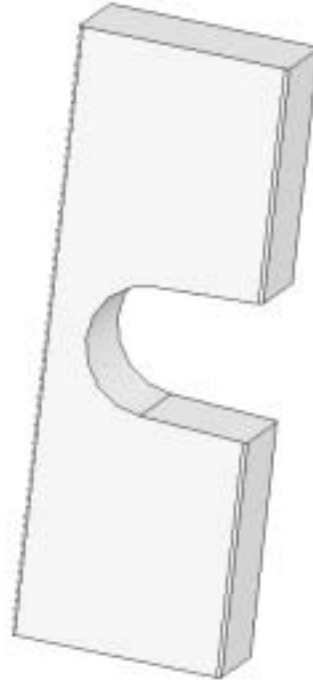
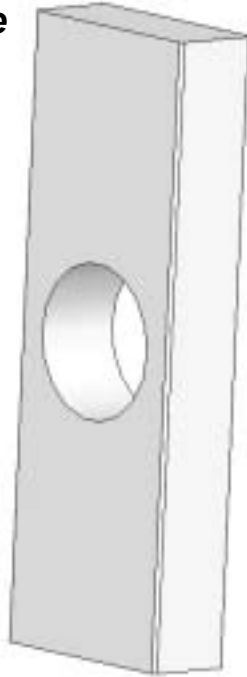




# INSTALLATION INSTRUCTIONS FOR FIG 533 STUD SHOES

9800 Bustleton Ave  
Phila, PA 19115  
www.gfm.biz



**DRILLED HOLE IN CENTER OF STUD  
( PREFERRED METHOD OF USE )  
FOR 1-1/2 PIPE DRILL 2-1/8 HOLE  
FOR 2 PIPE DRILL 2-1/2 HOLE**

**NOTCHED HOLE  
DRILL AS WITH HOLE  
BUT SAW TO NOTCH OUT**



## NAIL SCHEDULE ( FILL ALL HOLES )

- 533-1 SINGLE      12 - 10d X 1-1/2**
- 533-2 DOUBLE      12 - 10d**
- 533-3 TRIPLE      12 - 10d**

INSTALL PER IRC R602.6 &  
LOCAL BUILDING CODES