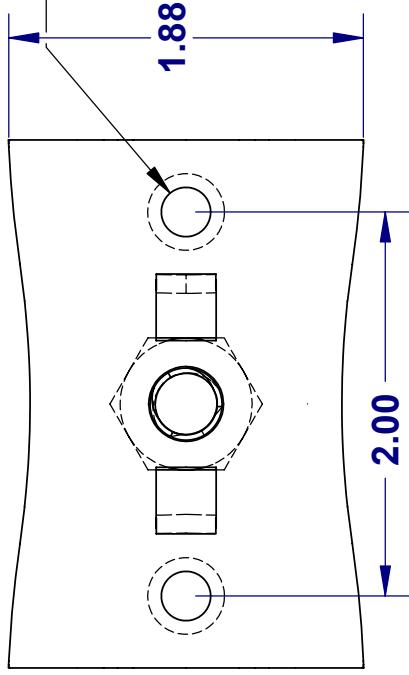


THE INFORMATION CONTAINED IN THIS DRAWING IS THE SOLE PROPERTY OF GREENFIELD MFG CO. ANY REPRODUCTION IN PART OR WHOLE WITHOUT THE WRITTEN PERMISSION OF GREENFIELD MFG CO IS PROHIBITED.

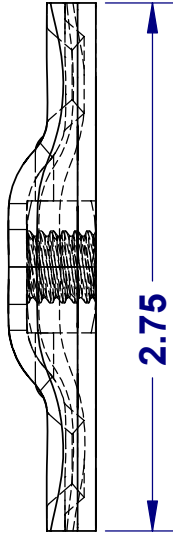
$\phi .26$   
COUNTER SINK FOR  
FLAT HEAD SCREW



D



C



HEAVY HEX NUT  
COPPER PLATED  
3/8 - 16 UNC  
FULLY CAPTIVATED

2.75

B



**made in USA**

**SAFE WORKING LOAD  
200 POUNDS LIMITED BY  
FASTENERS ATTACHED  
PROOF TESTED AT 2000 LBS  
TEST REPORTS AT WWW.GFM.BIZ**

UNLESS OTHERWISE SPECIFIED  
DIMENSIONS ARE IN INCHES  
TOLERANCES ARE:  
FRACTIONS .XX +/-.03 .XX + 1  
+/- 1/8 .XXX +/-.01

MATERIAL  
**13 GA. HR/CR STEEL  
COPPER PLATED**

CAD GENERATED DRAWING.  
DO NOT MANUALLY UPDATE

APPROVALS	DATE
DRAWN EG	2/13
CHECKED SB	2/13

**GREENFIELD MFG CO**  
9800 Bustleton Ave.  
Philadelphia, Pa. 19115

**BOWTIE FLANGE PLATE**

A P/N **FIG.489** REV.

SCALE **BOWTIE489** SHEET OF 1

DO NOT SCALE DRAWING

3

4

5

6

7

8

A

B

C

D

1

2

3

4

5

6

7

8