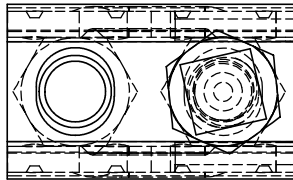
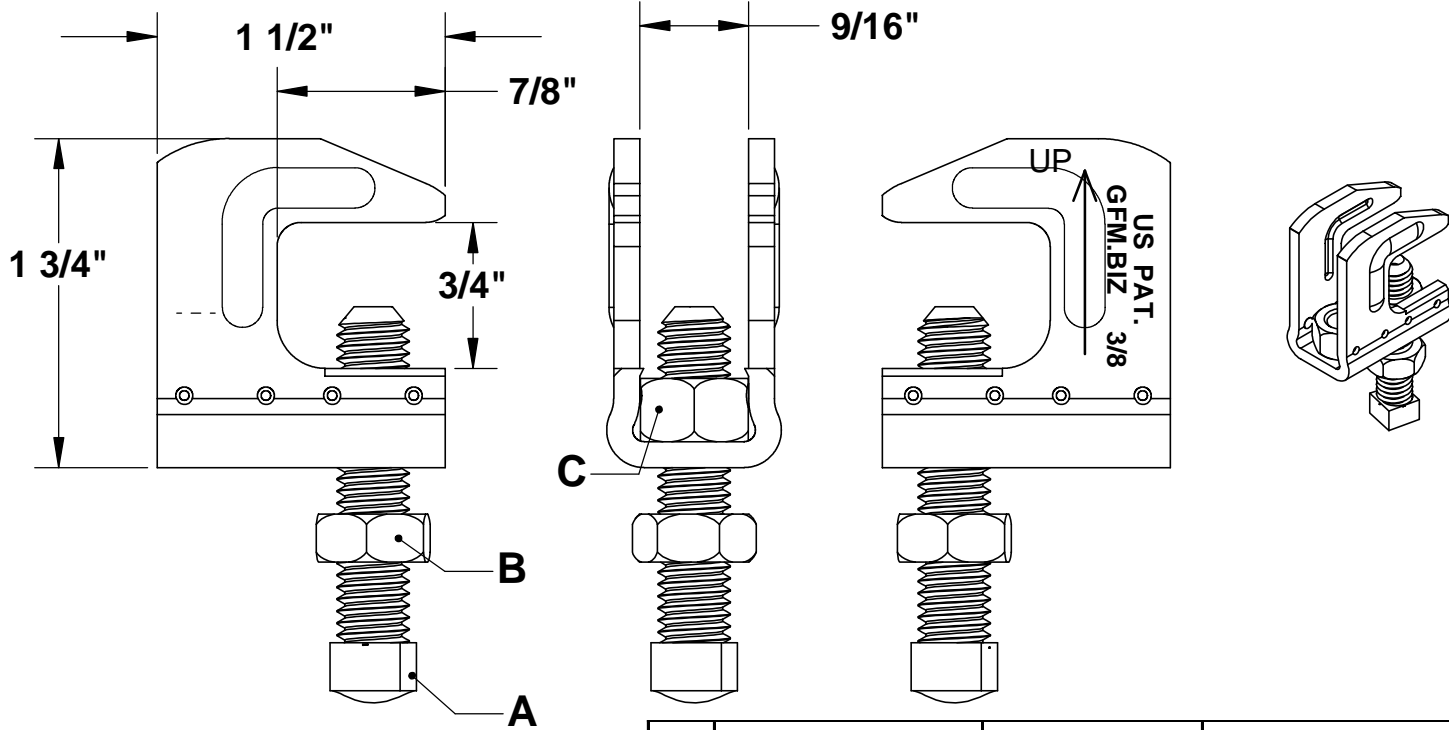


THE INFORMATION CONTAINED IN THIS DRAWING IS THE SOLE PROPERTY OF GREENFIELD MFG CO ANY REPRODUCTION IN PART OR WHOLE WITHOUT THE WRITTEN PERMISSION OF GREENFIELD MFG CO IS PROHIBITED.

6/1/21 EG UPDATED MARKING ON PART

No changes made without notification to FM or UL



A	SQUARE HEAD CUP POINT SET SCREW	3/8-16 X 1-3/4	SAE J429 GR 2, Zinc Plated STEEL (1010 MIN.), Case Hrdn. To 15N80 @ .0032-.010 Dp.
B	JAM NUT	3/8-16	ANSI/ASME B18.2.2. Zinc-Plated Grade 2 Steel
C	HEX NUT X 2	3/8-16	ANSI/ASME B18.2.2. Zinc-Plated Grade 2 Steel

REC. SET SCREW TORQUE 60 IN-LBS.

MAX REC LOAD 400 LBS
182 KG

MADE IN USA
US PAT. 8,882,056

UNLESS OTHERWISE SPECIFIED
DIMENSIONS ARE IN INCHES
TOLERANCES ARE:
FRACTIONS DECIMALS ANGLES
+/- 1/16 .XX +/- .03 .XX + 1
.XXX +/- .01

MATERIAL
GALV STEEL .125 MIN

DO NOT SCALE DRAWING

CAD GENERATED DRAWING,
DO NOT MANUALLY UPDATE

APPROVALS	DATE
DRAWN EG	6/21
CHECKED LB	

GREENFIELD MFG CO
9800 Bustleton Ave, Philadelphia, Pa 19115

TOP BEAM CLAMP
FOR 3/8 THREAD ROD

A	P/N	325	REV	6
SCALE	CAD FILE	C:\AMP12.8.SLDDRW	SHEET	OF