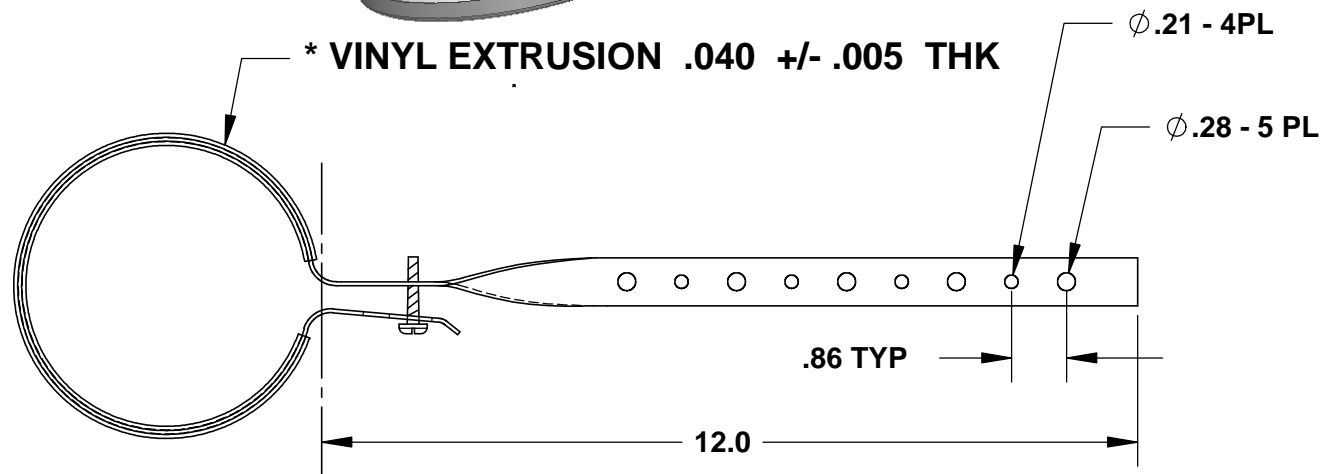
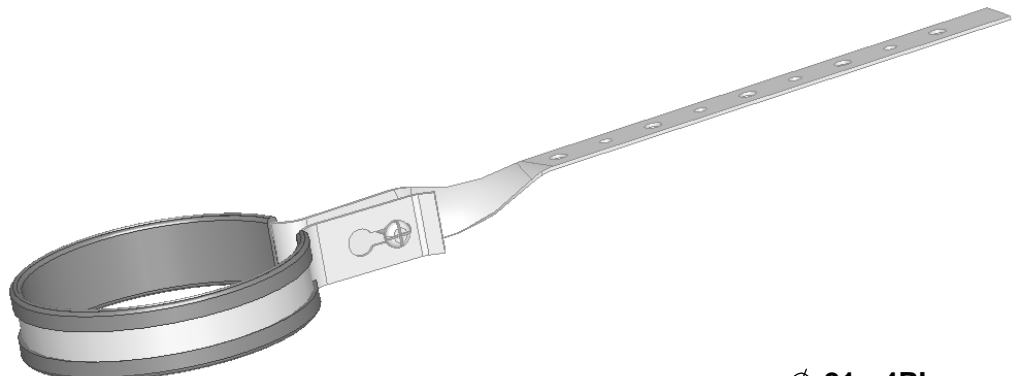


THE INFORMATION CONTAINED IN THIS DRAWING IS THE SOLE PROPERTY OF GREENFIELD MFG CO ANY REPRODUCTION IN PART OR WHOLE WITHOUT THE WRITTEN PERMISSION OF GREENFIELD MFG CO IS PROHIBITED.  
 © COPYRIGHT GREENFIELD MANUFACTURING 2007

**MADE IN USA**



SIZE	MATERIAL
1-1/2	18 GA X 0.75
2	18 GA X 0.75
3	16 GA X 0.75
4	16 GA X 0.75
6	16 GA X 0.75

**MAX RECOMMENDED LOAD 150 LBS  
 MAX TEMPERATURE 150° F**

\* EXTRUSION COATING MATERIAL:  
 SYLVIN 8925-80  
 HARDNESS 80-90 A DUROMETER  
 TENSIL STRENGTH 2400  
 ELOGATION % 375

UNLESS OTHERWISE SPECIFIED DIMENSIONS ARE IN INCHES TOLERANCES ARE: FRACTIONS DECIMALS ANGLES + .XX+ .XX + 1 .XXX+.XXX	CAD GENERATED DRAWING, DO NOT MANUALLY UPDATE		<b>GREENFIELD MFG CO</b>	
	APPROVALS	DATE	9800 Bustleton Ave, Phila, PA 19115	
	DRAWN EG	1/12	P/N <b>DWV COATED</b>	
MATERIAL <b>STEEL GALVANZED</b>	CHECKED SB	1/12	A <b>FIG 320</b> REV.	
FINISH --	DO NOT SCALE DRAWING		SCALE	CAD FILE: FIG320W.SLD SHEET OF