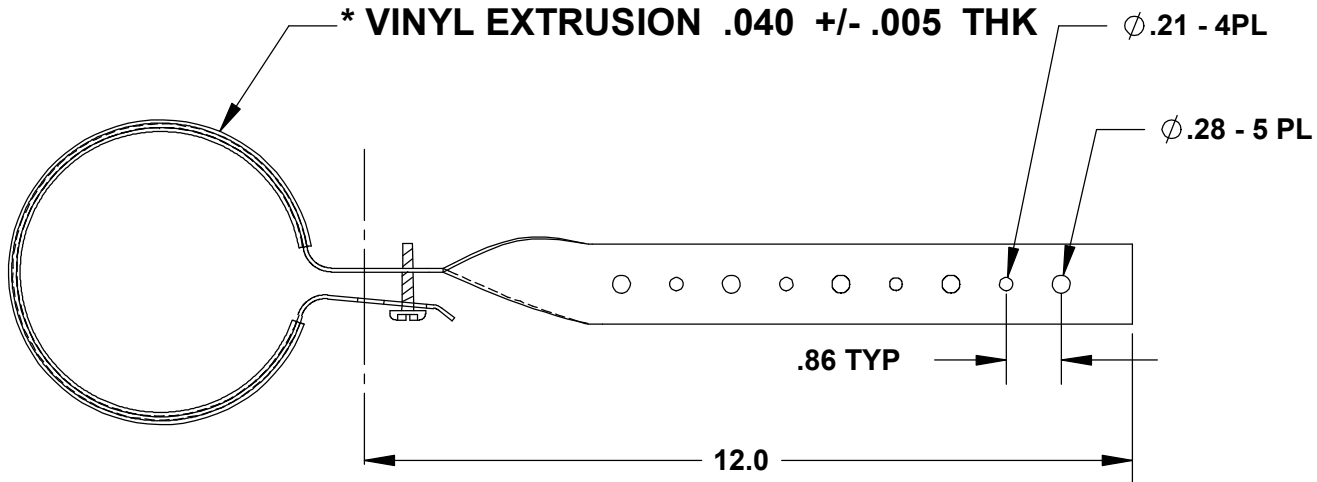
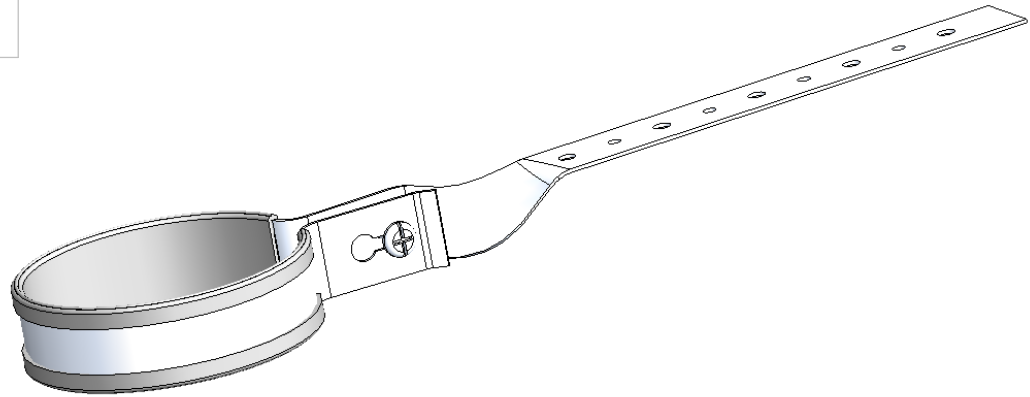


THE INFORMATION CONTAINED IN THIS DRAWING IS THE SOLE PROPERTY OF GREENFIELD MFG CO ANY REPRODUCTION IN PART OR WHOLE WITHOUT THE WRITTEN PERMISSION OF GREENFIELD MFG CO IS PROHIBITED.

**MADE IN USA**



SIZE	MATERIAL
1-1/2	18 GA X 1
2	18 GA X 1
3	16 GA X 1
4	16 GA X 1
6	16 GA X 1

**MAX RECOMMENDED LOAD 150 LBS  
MAX TEMPERATURE 150° F**

**\* EXTRUSION COATING MATERIAL:  
SYLVIN 8925-80  
HARDNESS 80-90 A DUROMETER  
TENSIL STRENGTH 2400  
ELOGATION % 375**

UNLESS OTHERWISE SPECIFIED DIMENSIONS ARE IN INCHES TOLERANCES ARE: FRACTIONS DECIMALS ANGLES + .XX+ .XX + 1 .XXX+.XXX	CAD GENERATED DRAWING, DO NOT MANUALLY UPDATE		<b>GREENFIELD MFG CO</b>	
	APPROVALS	DATE	9800 BUSTLETON AVE , PHILA.,PA. 19115	
MATERIAL <b>STEEL GALVANZED</b>	DRAWN EG	CHECKED SB	P/N	<b>DWV COATED</b>
FINISH --			A	<b>FIG 220</b>
DO NOT SCALE DRAWING			SCALE	REV.
			CAD FILE: FIG220W.SLD	SHEET OF