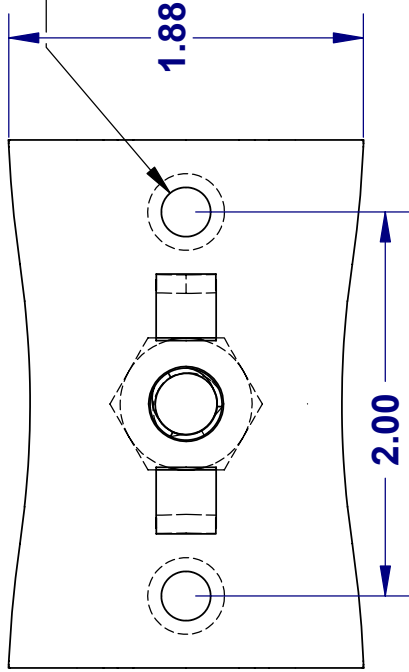
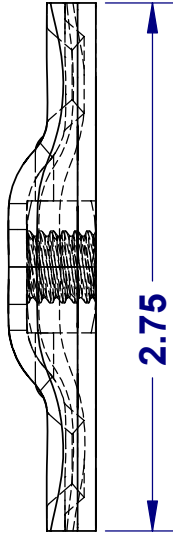


THE INFORMATION CONTAINED IN THIS DRAWING IS THE SOLE PROPERTY OF GREENFIELD MFG CO. ANY REPRODUCTION IN PART OR WHOLE WITHOUT THE WRITTEN PERMISSION OF GREENFIELD MFG CO IS PROHIBITED.

$\phi$  .26  
COUNTER SINK FOR  
FLAT HEAD SCREW

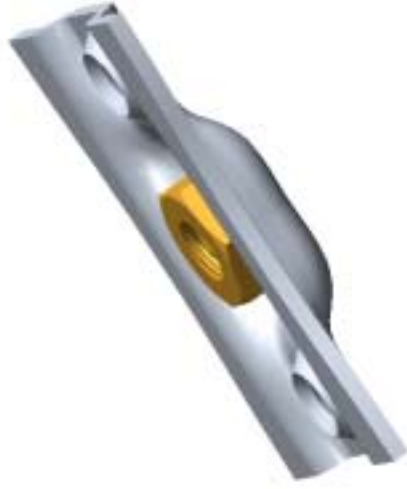


HEAVY HEX NUT  
ZINC PLATED  
3/8 - 16 UNC  
FULLY CAPTIVATED



**made in USA**

**SAFE WORKING LOAD  
200 POUNDS LIMITED BY  
FASTENERS ATTACHED  
PROOF TESTED AT 2000 LBS  
TEST REPORTS AT WWW.GFM.BIZ**



**GREENFIELD MFG CO**  
9800 Bustleton Ave.,  
Philadelphia, Pa 19115

**BOWTIE FLANGE PLATE**

CAD GENERATED DRAWING.  
DO NOT MANUALLY UPDATE

|           |      |
|-----------|------|
| APPROVALS | DATE |
| DRAWN     | EG   |
| CHECKED   | SB   |

|                |         |      |
|----------------|---------|------|
| SCALE          | P/N     | REV. |
| FIG 208 BOWTIE | FIG.208 |      |

SHEET 1 OF 1

UNLESS OTHERWISE SPECIFIED  
DIMENSIONS ARE IN INCHES  
TOLERANCES ARE:  
FRACTIONS .XX +1  
DECIMALS .XX +1  
ANGLES .XXX +/- .01

MATERIAL  
**13 GA. HR/CR STEEL**

DO NOT SCALE DRAWING

SAFE WORKING LOAD  
200 POUNDS LIMITED BY  
FASTENERS ATTACHED  
PROOF TESTED AT 2000 LBS  
TEST REPORTS AT WWW.GFM.BIZ