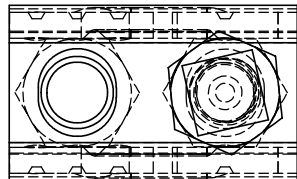
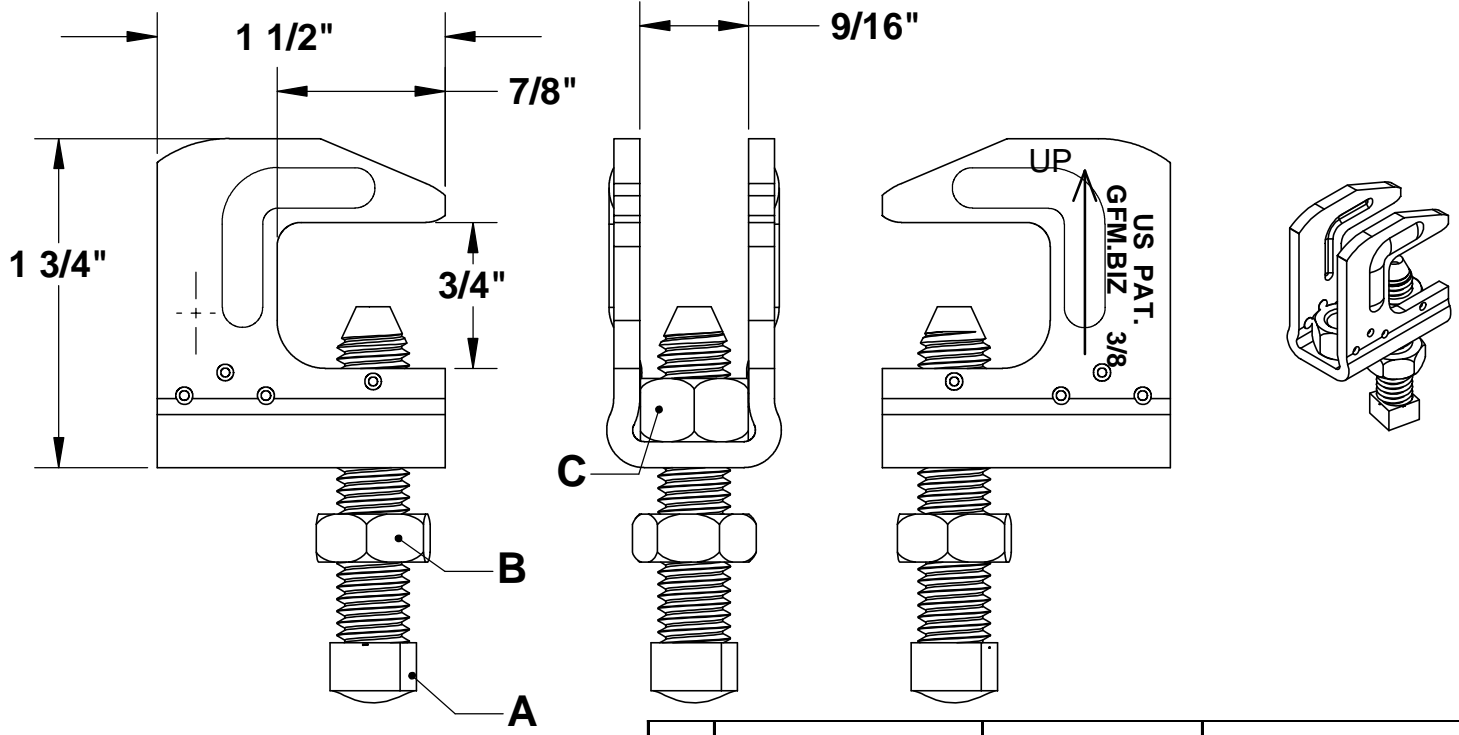


THE INFORMATION CONTAINED IN THIS DRAWING IS THE SOLE PROPERTY OF GREENFIELD MFG CO ANY REPRODUCTION IN PART OR WHOLE WITHOUT THE WRITTEN PERMISSION OF GREENFIELD MFG CO IS PROHIBITED.



A	SQUARE HEAD CUP POINT SET SCREW	3/8-16 X 1-3/4	SAE J429 GR 2, Zinc Plated STEEL (1010 MIN.), Case Hrdn. To 15N80 @ .0032-.010 Dp.
B	JAM NUT	3/8-16	ANSI/ASME B18.2.2. Zinc-Plated Grade 2 Steel
C	HEX NUT X 2	3/8-16	ANSI/ASME B18.2.2. Zinc-Plated Grade 2 Steel

RECOMMENDED SET SCREW TORQUE 60 IN-LBS.

**MAX REC LOAD 400 LBS
182 KG**

**MADE IN USA
US PAT. 8,882,056**

UNLESS OTHERWISE SPECIFIED DIMENSIONS ARE IN INCHES
TOLERANCES ARE:
FRACTIONS DECIMALS ANGLES
+/- 1/16 .XX +/- .03 .XX + 1
.XXX +/- .01
MATERIAL
.125 MIN THK

CAD GENERATED DRAWING, DO NOT MANUALLY UPDATE
APPROVALS DATE
DRAWN EG 6/1/2021
CHECKED LB

GREENFIELD MFG CO
9800 Bustleton Ave., Philadelphia, Pa 19115

TOP BEAM CLAMP FOR 3/8 THREAD ROD
A P/N **125** REF **6**

DO NOT SCALE DRAWING
SCALE 1:1 CAD FILE: **Figure 125.SLDRW** SHEET OF