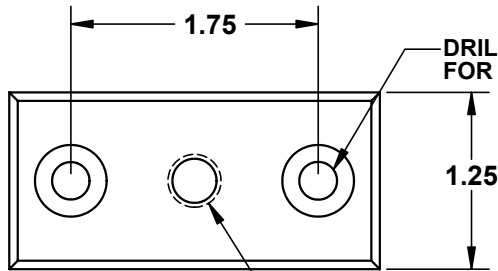
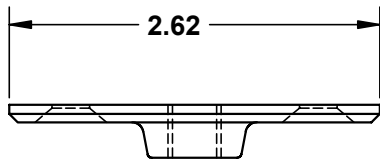
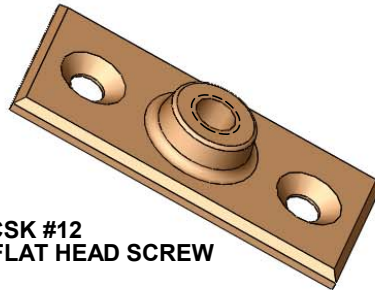


THE INFORMATION CONTAINED IN THIS DRAWING IS THE SOLE PROPERTY OF GREENFIELD MFG CO. ANY REPRODUCTION IN PART OR WHOLE WITHOUT THE WRITTEN PERMISSION OF GREENFIELD MFG CO IS PROHIBITED.



DRILL & CSK #12 FOR #12 FLAT HEAD SCREW

DRILL & TAP 3/8 - 16 UNC -2B



MAX REC. LOAD = 180 LBS

*** ZINC PLATED PLUS
A BAKED COPPER COLORED EPOXY
POWDER FINISH**

UNLESS OTHERWISE SPECIFIED DIMENSIONS ARE IN INCHES	
TOLERANCES ARE:	
FRACTIONS	DECIMALS
+/- 1/8	.XX +/- .03
	.XXX +/- .01
ANGLES	
	.XX + 1
MATERIAL	
DUCTILE IRON COPPER EPOXY FINISH *	
DO NOT SCALE DRAWING	

CAD GENERATED DRAWING. DO NOT MANUALLY UPDATE	
APPROVALS	DATE
DRAWN EG	1/11
CHECKED SB	

GREENFIELD MFG CO	
920 LEVICK ST., PHILA., PA. 19111	
P/N	HANGER FLANGE
A	FIG 489
SCALE	CAD FILE: FIG 489.SLDDRW SHEET OF

A

B

C

D

D

C

B

A

8

7

6

5

4

3

2

1

8

7

6

5

4

3

2

1