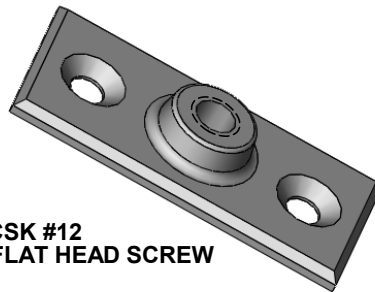
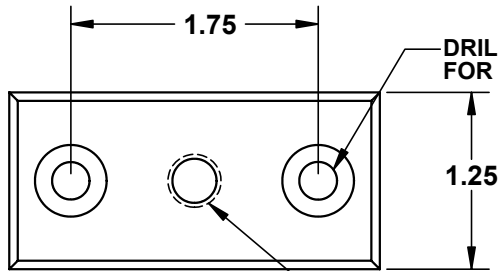
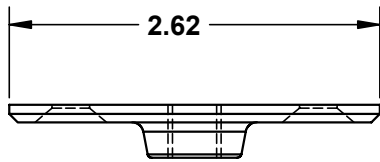


THE INFORMATION CONTAINED IN THIS DRAWING IS THE SOLE PROPERTY OF GREENFIELD MFG CO. ANY REPRODUCTION IN PART OR WHOLE WITHOUT THE WRITTEN PERMISSION OF GREENFIELD MFG CO IS PROHIBITED.



DRILL & CSK #12  
FOR #12 FLAT HEAD SCREW

DRILL & TAP  
3/8 - 16 UNC - 2B 208-3/8  
1/2 - 13 UNC - 2B 208-1/2

MAX REC. LOAD = 180 LBS  
FOR 1/2 & 3/8 THREAD

UNLESS OTHERWISE SPECIFIED DIMENSIONS ARE IN INCHES		CAD GENERATED DRAWING. DO NOT MANUALLY UPDATE		<b>GREENFIELD MFG CO</b>	
TOLERANCES ARE:		APPROVALS		920 LEVICK ST., PHILA., PA. 19111	
FRACTIONS	DECIMALS	ANGLES	DATE	P/N <b>HANGER FLANGE</b>	
+/- 1/8	.XX	+/- .03	1/11	A	<b>FIG 389</b>
	.XXX	+/- .01	CHECKED SB	SCALE	REV.
MATERIAL		DO NOT SCALE DRAWING		CAD FILE	SHEET OF
<b>DUCTILE IRON</b> <b>ZINC PLATED FINISH</b>				<b>FIG 389.SLDDRW</b>	