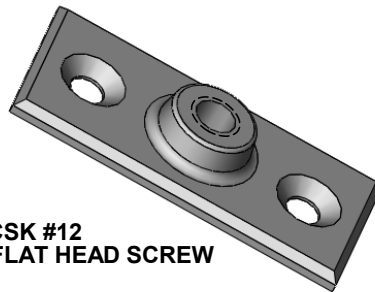
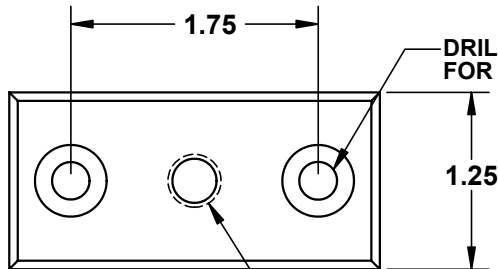
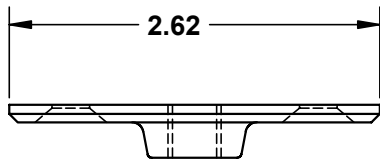


THE INFORMATION CONTAINED IN THIS DRAWING IS THE SOLE PROPERTY OF GREENFIELD MFG CO. ANY REPRODUCTION IN PART OR WHOLE WITHOUT THE WRITTEN PERMISSION OF GREENFIELD MFG CO IS PROHIBITED.



DRILL & CSK #12 FOR #12 FLAT HEAD SCREW

DRILL & TAP
 3/8 - 16 UNC - 2B 208-3/8
 1/2 - 13 UNC - 2B 208-1/2

**MAX REC. LOAD = 180 LBS
 FOR 1/2 & 3/8 THREAD**

UNLESS OTHERWISE SPECIFIED DIMENSIONS ARE IN INCHES		
TOLERANCES ARE:		
FRACTIONS	DECIMALS	ANGLES
+/- 1/8	.XX +/- .03 .XXX +/- .01	.XX + 1
MATERIAL		
DUCTILE CAST IRON PLAIN FINISH		
DO NOT SCALE DRAWING		

CAD GENERATED DRAWING. DO NOT MANUALLY UPDATE	
APPROVALS	DATE
DRAWN EG	1/11
CHECKED SB	

GREENFIELD MFG CO	
920 LEVICK ST., PHILA., PA. 19111	
P/N	HANGER FLANGE
A	FIG 208
SCALE	CAD FILE: FIG 208.SLDDRW SHEET OF

D
C
B
A

8 7 6 5 4 3 2 1

8 7 6 5 4 3 2 1